



Power/mation[®]

Food & Beverage

- Safety & Throughput
- The Path to Automation
- Key Hygienic Products
- The Power/mation Advantage

www.powermation.com
800.843.9859





Power/mation works with you to solve your business challenges with innovative automation solutions and exceptional customer service. When it comes to the food we eat and the water we drink, the importance of this pledge is clear. Power/mation not only offers corrosion-resistant, washdown-ready technology, but also over 50 years of automation experience. Whether your facility is implementing automation for the first time, or you are shopping for replacement parts for an existing solution, Power/mation is your trusted partner in automation.

Safety

In 2011, the Food Safety Modernization Act (FSMA) was signed into law. This was the first significant food and beverage legislation since 1986. The law aims to prevent both health and economic impacts of poorly processed foods.

Title 21, § 117.40 of FSMA outlines the cleanability and cross contamination standards to which plants must adhere for their products to be deemed safe and avoid recalls.

Power/mation and our industry partners not only supply these products, but in the case of German automation leader Festo, help to draft the legislation. The Power/mation sales team works closely with supplier partners to assess your application to verify compliance with FSMA guidelines.

For more details on FSMA visit www.powermation.com.



Throughput

According to the United Nations, “The world’s population is expected to increase by 2 billion persons in the next 30 years, from 7.7 billion currently to 9.7 billion in 2050.” Food producers in the United States will bear the greatest burden to feed future generations.

This is an unprecedented rate of growth. A major concern in the food and beverage space is simply product throughput—can you produce enough to satisfy the market demands?

Challenges seen in 2020 underscore the need to examine the fundamental ways we do business. The COVID-19 pandemic shut down facilities across America due to a human workforce contracting the disease and being unable to work. Similarly, product recalls and facility downtime are a symptom of ill-prepared facilities.

Maintaining a reliable human workforce in remote areas of the United States is an increasing challenge as production increases. Supplementing your application with automation tools such as robotics and equipment health monitoring can make your existing workforce operate more efficiently.

Power/mation provides expert consultation to implement automation for new customers, or to update existing facilities that have legacy solutions in place.

The Most Comprehensive Offering Available

Power/mation offers solutions for both equipment manufacturers and end users. This is possible due to Power/mation's relationship with industry-best suppliers. Our key partners in the food and beverage segment are shown below with a full listing of our partners available at www.powermation.com.



Products in the Power/mation Food & Beverage solution are designed to be corrosion-resistant and washdown safe to accommodate CIP installations. Many products have IP69K ratings. Featured products include:

- Slope top stainless steel enclosures from Rittal that guide washing fluid and bacteria away from hardware.
- Components from Festo designed with rounded edges and high IP protection ratings to withstand routine washdown cycles to meet FSMA guidelines.
- Best-in-class Tolomatic electric actuators are constructed of stainless steel with oversized seals to tolerate the harshest conditions.

Visit www.powermation.com/food-and-beverage/applications/ for more in-depth product highlights.

Power/mation Solutions Group

Our team is comprised of design engineers, project managers, and assembly technicians. Let our team streamline your manufacturing process with a host of benefits for washdown applications such as creating custom NEMA 4X-rated panels. Other benefits of working with Power/mation Solutions Group include simplification of purchase order paperwork and payment terms. More details [online](#).

Power/mation Solutions Group specializes in services such as:

- Enclosure cutting, drilling, and tapping
- Large enclosure assembly and shipping
- Cordset assembly
- Din rail assembly
- Kit labeling and packaging
- Custom safety fencing
- Custom control panels



Custom Solutions & Integration

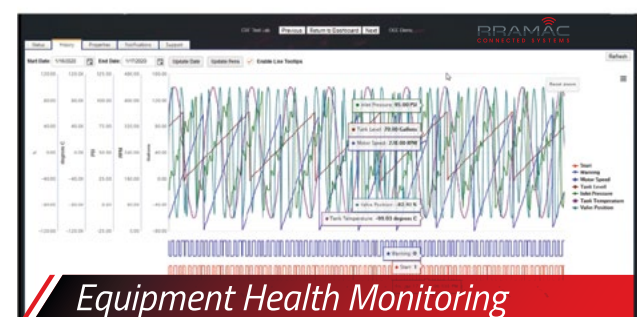
The Power/mation Advantage

A growing portfolio of world-class automation suppliers gives Power/mation a unique advantage in creating truly tailored automation solutions that are not limited by a single product line. Our trained, technical sales representatives are ready to diagnose the needs of your application. A full staff of product specialists are available for application consultation and assistance.



Workplace Safety

Power/mation offers a full line of automation safety equipment. Gas detection, interlocks, light curtains, and more are ready to ship. Stock and custom-designed social distance barriers are available for non-washdown areas of your facility to help keep your workforce healthy.



Equipment Health Monitoring

Monitor the applications throughout your facility with real time dashboards and data reporting. Power/mation also offers data plans, wireless radios, and sensors to complete your solution. Master your data and improve your facility's efficiency.

THE PATH TO AUTOMATION

In business since 1961, we know the challenges that come with integrating automation in a facility that previously has not embraced automation. Fortunately, decades of experience have given us the expertise to implement effective automation solutions in applications like those listed below.

Check out the illustration for a walkthrough of key functions in a typical food and beverage application. Implementing the outlined components will help you monitor Overall Equipment Effectiveness (OEE)—giving you insight on where process improvements can be made. Power/mation has experience in helping customers automate solutions in a variety industry segments:

- Pork
- Milk
- Yogurt
- Soda
- Canning
- Aeronomics
- Poultry
- Cheese
- Grain
- Beer
- Bottling
- Hydroponics

[READ MORE AT POWERMATION.COM/FOOD-AND-BEVERAGE](http://www.powermation.com/food-and-beverage)



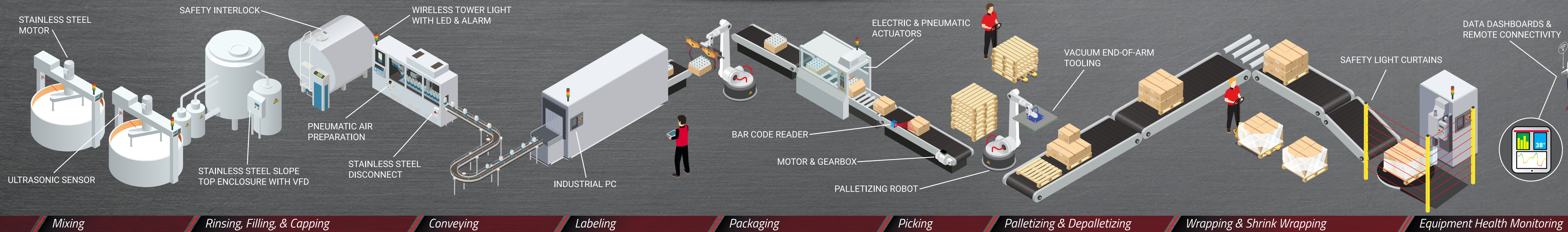
Industry Compatibility

Power/mation products support a wide array of industrial network protocols (Ethernet/IP, ProfiNet, EtherCAT, and others) making them the perfect choice for equipment upgrades and new applications which are compatible with your existing automation and control architecture.



Success Stories

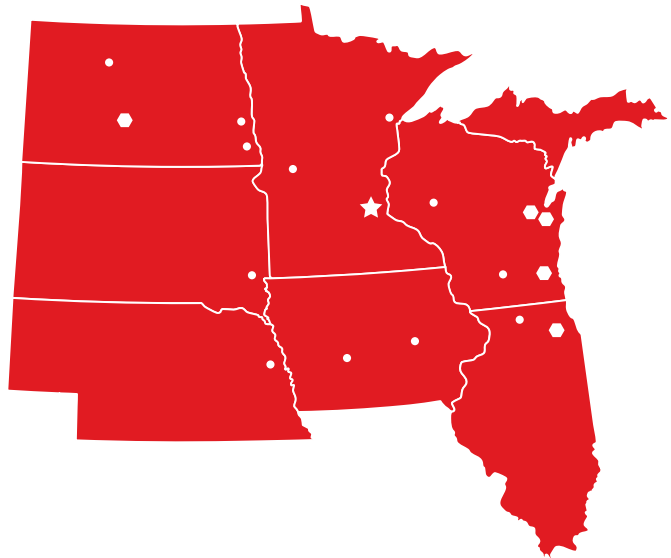
Visit our website to check out more materials from our suppliers on real world food and beverage applications. Learn how these cutting-edge products are applied.



Mixing | Rinsing, Filling, & Capping | Conveying | Labeling | Packaging | Picking | Palletizing & Depalletizing | Wrapping & Shrink Wrapping | Equipment Health Monitoring

Corporate Headquarters

St. Paul, MN
1310 Energy Lane
St. Paul, MN 55108
(800) 843-9859
(651) 605-3300
(651) 605-4400 Fax



Office Locations

Pewaukee, WI
N28 W23566 Creative Way
Pewaukee, WI 53072
(800) 242-2060
(262) 408-6100
(262) 523-0611 Fax

Appleton, WI
5485 W Grande Market Dr
Suite A
Appleton, WI 54913
(800) 242-2060
(920) 969-9917

Green Bay, WI
2221 Starr Ct
Green Bay, WI 54303
(800) 924-6260
(920) 497-6354
(920) 496-4363 Fax

Wood Dale, IL
581 N Edgewood Ave
Wood Dale, IL 60191
(800) 847-9896
(630) 475-4240
(630) 860-9177 Fax

Bismarck, ND
1307 Grumman Lane
Bismarck, ND 58504
(833) 200-5086
(651) 605-4400 Fax

Sales Territories

Minnesota

Twin Cities Metro
(800) 843-9859 Customer Service
(651) 605-3300 Sales

Alexandria
(800) 843-9859 Customer Service
(320) 766-5878 Sales

Duluth
(800) 843-9859 Customer Service
(218) 628-6063 Sales
(218) 628-6063 Fax

Mankato
(800) 843-9859 Customer Service
(612) 709-5208 Sales

Wisconsin

Madison
(800) 242-2060 Customer Service
(262) 523-0611 Fax

Eau Claire
(800) 843-9859 Customer Service
(715) 723-0730 Sales

North Dakota

Fargo
(800) 843-9859 Customer Service
(651) 605-4400 Fax

Minot
(800) 843-9859 Customer Service
(651) 605-4400 Fax

Wahpeton
(800) 843-9859 Customer Service
(651) 605-4400 Fax

South Dakota

Sioux Falls
(800) 843-9859 Customer Service
(605) 335-3046 Sales

Illinois

Rockford
(800) 847-9896 Customer Service
(630) 860-9177 Fax

Iowa

Des Moines
(800) 322-4589 Customer Service
(319) 395-0929 Fax

Cedar Rapids
(800) 322-4589 Customer Service
(319) 395-0929 Fax

Nebraska

Omaha
(800) 428-9036 Customer Service
(402) 445-8728 Fax



Power/mation[®]

800.843.9859
www.powermation.com

